

RENAULT KANGOO COMMERCIAL VEHICLE RANGE



(Enter Renault's world at Sky Guide 883 and www.renault.tv)

CHARTERHOUSE. APRIL 2010. PART NUMBER 7701 380 705
Renault U.K. Limited Customer Services, The Rivers Office Park, Denham Way, Maple Cross, Rickmansworth, Hertfordshire WD3 9NS. Tel: 0800 52 51 50.

RENAULT KANGOO COMMERCIAL VEHICLE RANGE



Although every effort has been made to ensure that the information contained within this brochure is as accurate and up to date as possible, Renault U.K. reserves the right to modify its models without notice including their characteristics, specifications, equipment and accessories. Brochures inevitably become out of date or inaccurate in some respects, in that such characteristics, equipment, specifications or accessories may be changed after the publication date given below and can differ from the descriptions given. It is therefore necessary to check with your Renault dealer before purchasing any product that the characteristics, specifications, equipment or accessories of the vehicle on order are as advertised. Publication date April 2010.

DRIVE THE CHANGE



WHY RENAULT?

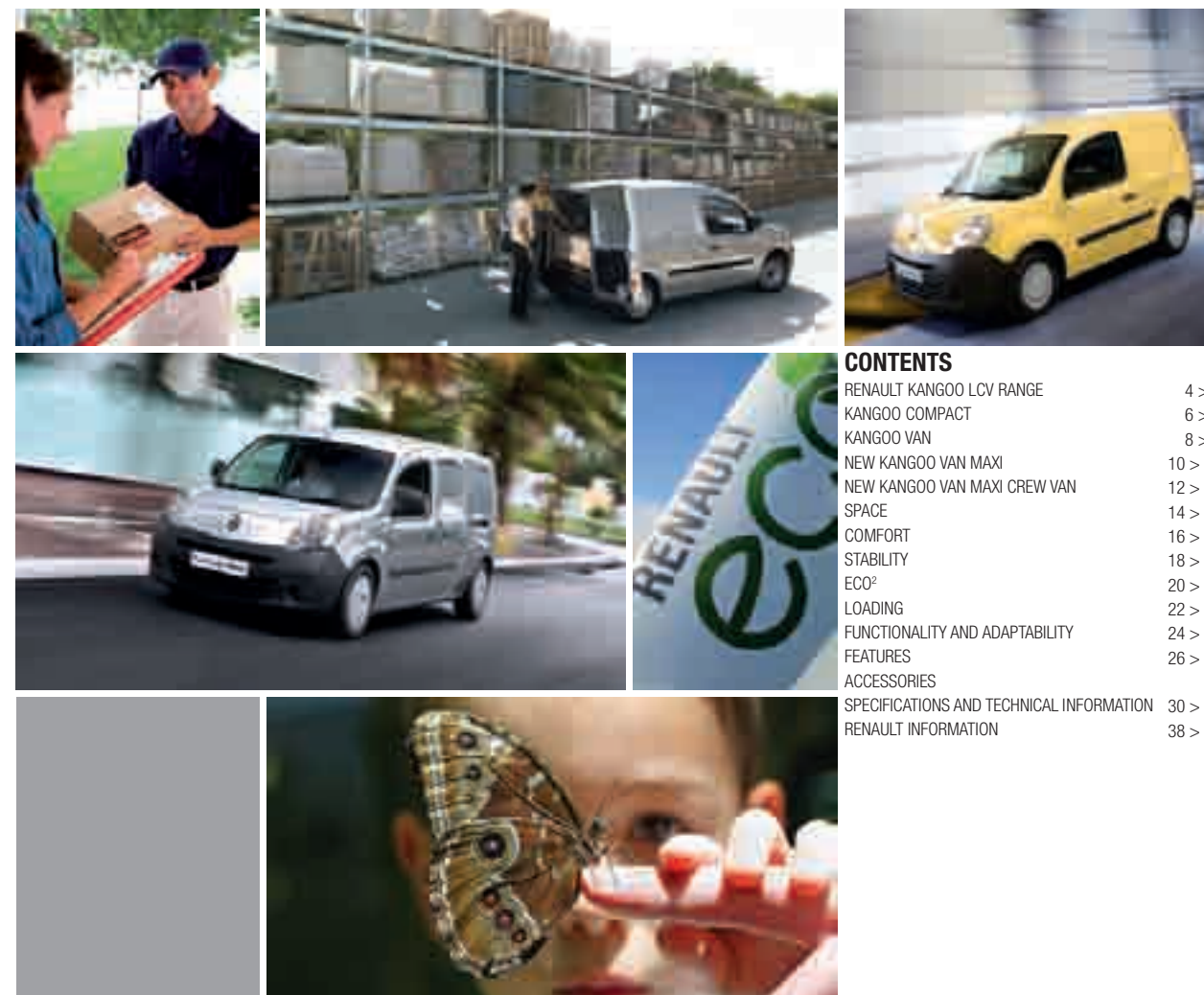
We're driven by a passion to meet and exceed people's needs, and that's what drives the industry forward. It's been that way with us for over a hundred years. But in today's rapidly-changing environment, it's more important than ever that we source new solutions that will safeguard all our futures.

We know that the car is at a turning point, it has to evolve whether you believe in global warming or not; to emit less in cities, to make less noise and to use increasingly scarce energy more efficiently.

At Renault we are working to create more affordable cars, with radically lower CO₂ emissions. For the widest possible audience. Today that's our collection of 35 'eco²' models. Starting next year there will be a groundbreaking range of zero emission electric vehicles, from a nippy town car to a comfortable family saloon and a small van. Silent, clean vehicles which will emit no CO₂ in use, and none at generation where energy comes from hydro, wind, solar or nuclear (2g/100km). They will also be affordable to run. Around £1.30 worth of electricity will take you over 100 miles. All from a battery that can be recharged in as little as twenty minutes at one of a network of charging points, currently being developed. And parking and congestion charges should all be lower, too.

We believe it's time to make the car a driver of progress once more. We are determined to drive that change. Soon you will be able to join us.

Renault. Drive the change.



CONTENTS	
RENAULT KANGOO LCV RANGE	4 > 5
KANGOO COMPACT	6 > 7
KANGOO VAN	8 > 9
NEW KANGOO VAN MAXI	10 > 11
NEW KANGOO VAN MAXI CREW VAN	12 > 13
SPACE	14 > 15
COMFORT	16 > 17
STABILITY	18 > 19
ECO ²	20 > 21
LOADING	22 > 23
FUNCTIONALITY AND ADAPTABILITY	24 > 25
FEATURES	26 > 28
ACCESSORIES	29
SPECIFICATIONS AND TECHNICAL INFORMATION	30 > 37
RENAULT INFORMATION	38 > 39

RENAULT KANGOO COMMERCIAL VEHICLE RANGE

THE RIGHT SIZE FOR YOUR BUSINESS.



**Kangoo Compact
2 seats**



**Kangoo Van
2 seats**



**New Kangoo Van Maxi
2 or 5 seats**





KANGOO COMPACT

EASIER TO MANOEUVRE IN AND ABOUT TOWN.



With the comfort of an MPV and the features of a van, the Kangoo Compact is the ideal business partner. Its smaller size makes it particularly easy to manoeuvre and nippy around town. On the inside, however, it's still really spacious. The versatile Kangoo Compact has a loading area ranging from 2.3 m³ with two seats. Both generous on space and practical, the Kangoo Compact adapts to every way you want to work. The shorter wheelbase has a direct influence on the turning circle which is a low 9.70 metres between kerbs. That's a record for a compact utility vehicle, and puts it ahead of its rivals.



KANGOO VAN

THE PERSONALISED COMMERCIAL VEHICLE.



Make it your very own – this is a more practical, more comfortable, more personal commercial vehicle. A versatile third-generation van, Kangoo Van offers an outstanding level of comfort. It meets all your professional and business needs – acting as your mobile office and a made to measure carry-all. And what's more, you'll have peace of mind with Renault's 3 year/100,000 mile manufacturer warranty and 3 years AA cover as standard.

NEW KANGOO VAN MAXI

MAXIMUM LOAD LENGTH FOR MINIMUM EXTERIOR SIZE.

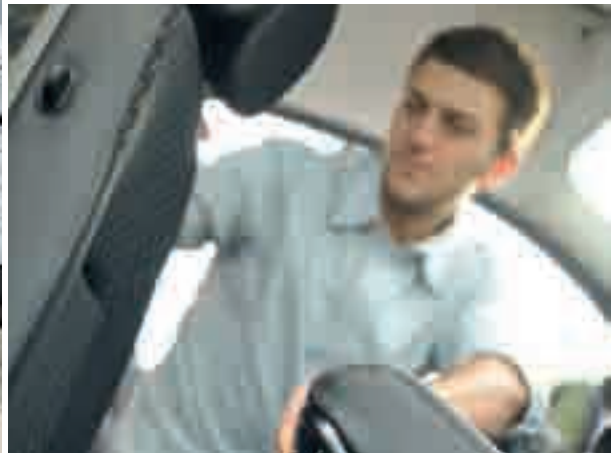


The Kangoo LCV range has grown with the introduction of a Maxi Van version. It features a true long wheelbase, 40cm longer than Kangoo Van. The Kangoo Van Maxi allows you to transport objects up to 2.9 metres long, with 800 kg of payload and up to 4.6m³ of load volume capacity. Thanks to exterior dimensions comparable with those of an MPV, this van allows you to travel comfortably and park easily in and around town and in multi-storey car parks, whilst benefiting from a load volume you would only usually expect in a bigger van.



NEW KANGOO VAN MAXI CREW VAN

CAR-LIKE COMFORT FOR YOUR OWN CREW.



For the first time in the UK, Renault offers a Crew Van in the Kangoo family. Now you don't have to choose between the transport of goods and the transport of people. You can travel with five people in comfort, and still benefit from 1.3m³ load volume. The rear seats are both foldable and split- this adaptability allows you carry longer objects, yet still have space for a rear passenger. You can also choose to fold the seats 'flat' which gives you up to 3.4 m³ load volume.

Importantly, our Crew Van is unglazed in the rear side doors and rear doors as standard, which - importantly for your business - makes the Crew Van very much "a van" in the eyes of the VAT man.*

* You are advised to contact your local Tax Authority



THE BEST USE OF SPACE

MULTIPLE STORAGE COMPARTMENTS, TAILORED TO SUIT YOU.



Perfect for a professional's every need, the range of storage compartments make maximum use of the available space. The central storage module allows you to keep essential items at your fingertips. A central in-dash storage compartment is ideal for A4 documents. Or for bulkier objects, you can use the overhead parcel shelf. And as a bonus, the 15-litre glovebox is big enough to contain a notebook laptop.





UNRIVALLED COMFORT AT WORK

ERGONOMICS AND FEATURES THAT TAKE THE STRESS OUT OF YOUR DAY.

With the largest front seat capacity in its class, the Kangoo Van has exceptional elbow room for more freedom of movement. The driver's seat is particularly comfortable and easy to access, while the height-adjustable steering wheel and driver's seat, dash-mounted gear lever, door handles and controls, along with the many storage compartments, are all within easy reach. MPV or van? The answer is both. The driver's seat in the Kangoo Van is just like that in a car. Quality presentation and finish, a spacious interior and functionality combine to make driving really comfortable. Kangoo Van also now has a whole host of options to make your working life easier and more enjoyable, like cruise control, radio CD with MP3 player and rear parking sensors. And the Kangoo Van now features exclusive integrated TomTom on '+' versions. See the back pages of this brochure to find out more or visit www.renault-vans.co.uk.

Note: Some features may be optional depending on version.

TOMTOM 



FIRST-RATE STABILITY

SUPREME ROAD HANDLING.



With their new lower, wider bodies, Kangoo Vans promise stable and safe road handling, particularly when cornering. This adds to their dynamic performance as well as driving precision and comfort. The braking system, with discs all round*, is particularly efficient. The Kangoo Van is capable of coming to a standstill from 62mph in a distance of just 40 metres! So you'll feel safer, and driving will always be a pleasure.

**Depending on version*

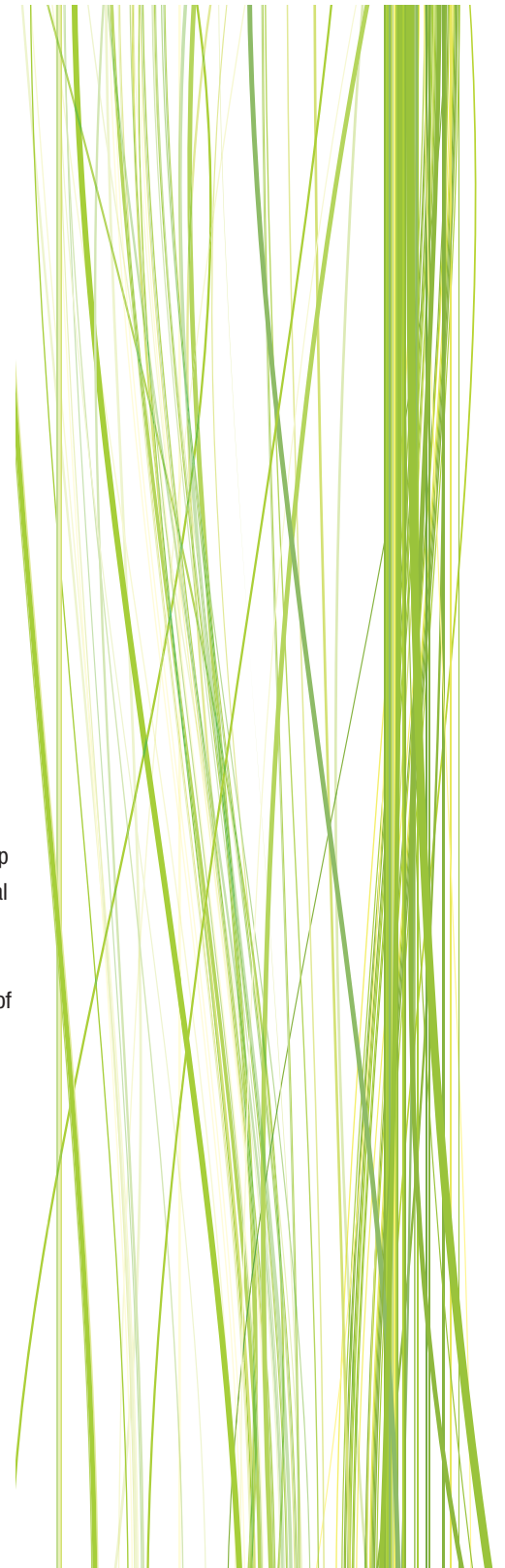
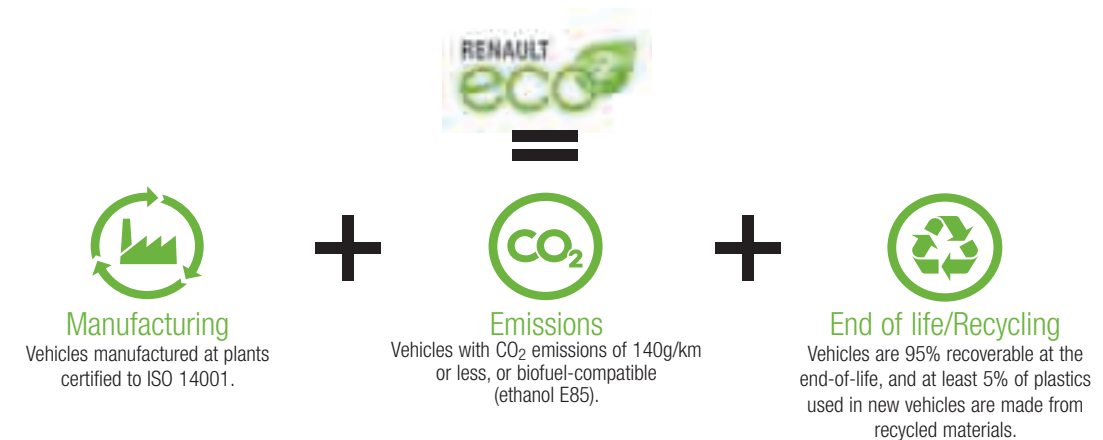


Best Green Van - Conventional Fuel

IT'S TIME TO CHANGE

As true professionals, the Kangoo Compact, Kangoo Van and New Kangoo Van Maxi are environmentally responsible. Renault offers a wide range of engine types, with two diesel engines which emit less than 140 g/km of CO₂, with a fuel economy of up to 57.65 mpg (combined cycle) and CO₂ emissions of 130 g/km on the dCi 85 engine. The Kangoo Van is the most economical in the market sector, this means that each of your journeys are more economical...and more ecological.

Built in an ISO 14001 certified factory, the Kangoo Compact, Kangoo Van and New Kangoo Van Maxi include more than 11% of recycled plastic, and 95% of the mass of the vehicle is recyclable at end of life. All these qualities give them the Renault eco² badge. And as independent proof of our achievements in this field, Renault has been awarded the Fleet Van Award, with the Kangoo Van ML19 dCi 85 winning Best Green Van (Conventional Fuel).





MAXIMUM EFFICIENCY

A GENEROUS LOAD AREA BIG ENOUGH FOR A PALLET... OR TWO!



Large enough to take a pallet on board, the Kangoo Van gives you a loading area 173 cm long and 121 cm wide between the wheel arches (up to a height of 50 cm)*. The standard payload is 650kg, but this can be increased to 800kg*. With the arrival of the New Kangoo Van Maxi, the interior load length increases by 40cm and two Euro-pallets can be loaded into the vehicle.

** Depending on version*

FUNCTIONALITY AND ADAPTABILITY

FOR THE JOBS YOU WANT IT TO DO!

PRACTICAL ADAPTABILITY

Each vehicle in the Kangoo LCV range can respond to your professional needs with a series of ingenious options and features which make your daily life at work that much easier.

For example, the sliding roof flap allows the vertical storage of oversized objects. Likewise, the passenger seat folds giving a flat base and 0.5m³ of additional storage volume and a highly useful extended 'useable' load length. The optional swivelling bulkhead meanwhile, affords the driver full protection with this set up - see images below.



STEP 1
24 > 25



STEP 2



STEP 3



STEP 4

COMFORT



1. HEIGHT ADJUSTABLE STEERING WHEEL

2. ELECTRIC WINDOW CONTROLS

3. HEIGHT ADJUSTABLE DRIVER'S SEAT

Please note that the upholstery pictured here is not available in the UK.



1. AIR CONDITIONING



2. STEERING WHEEL CONTROLS

Perfectly integrated, these controls allow you to control the radio and CD/MP3 player.

3. CD MP3 BLUETOOTH RADIO*

With Bluetooth, an RCA line for your i-Pod and a CD player capable of reading MP3 CDs, this radio allows you maximum connectivity for both work and play.

4. CARMINAT TOMTOM®

The Kangoo Commercial vehicle family offers integrated Carminat TomTom® and is the first commercial vehicle to offer a truly fully-integrated TomTom® sat nav system. Work out your best and safest route with real time traffic updates and safety camera notification, with all this information brought to you clearly on a colour screen pivoted towards the driver. The remote control allows you to operate different functions in a clear and intuitive way. This piece of great technology allows you to gain time on your journey, reduce your fuel consumption and reduce your running costs!



4. FOLDING DOOR MIRRORS

5. CRUISE CONTROL / SPEED LIMITER

Select a constant speed (control function) or set a maximum speed (limiter function).

6. AUTOMATIC HEADLIGHTS AND WIPERS

Located on the windscreen alongside the rear view mirror, these sensors activate the headlights automatically if light levels drop, and start the windscreen wipers if it starts to rain.



7. REAR PARKING SENSORS

When manoeuvring your vehicle, the system detects and warns you of possible obstacles with a series of beeps, which get faster as you approach the object.

8. TRIP COMPUTER

Displays all you need to know en route.



5. GLOVEBOX

The glovebox is spacious enough to store a notebook laptop.

6. OVERHEAD PARCEL SHELF

A wide and deep storage space above the windscreen.

7. CENTRAL STORAGE CONSOLE

Easy to access, it can hold A4 notepads, diary or order books.

8. CENTRAL ARMREST

Use this practical compartment to store cups, bottles, CDs, etc. (please note that the upholstery pictured here is not available in the UK).

**To make and receive calls safely, it is recommended that you pull over and stop in an appropriate area.*



LOAD AREA

1. LOAD AREA FLOOR COVERING AND FULL STEEL BULKHEAD

The standard bulkhead separates the loading area from the driver's cab and provides safer conditions for drivers. A floor covering can be fitted to protect the bodywork.

2. SLIDING ROOF FLAP

The hatch slides open towards the front, giving a 47cm by 1m wide surface, to enable bulky items to be transported easily.

3. SWIVELLING BULKHEAD

4. TUBULAR BULKHEAD

5. LOAD AREA LINING

6. LIGHTING FOR LOADING AREA

7. ANCHORAGE POINTS

8. SIDE ANCHORAGE POINTS

9. PLYLINING - AVAILABLE AS AN ACCESSORY (IMAGE IS FOR ILLUSTRATIVE PURPOSES ONLY)



ACCESSORIES

1. SEAT COVER

To protect the upholstery of your Kangoo, choose the Heavy Duty cover specifically designed for heavy use.



2. STANDARD TOW BAR

The standard tow bar, with anti-corrosion treatment, has been designed for long life use.

3. MUDFLAPS (FRONT AND REAR)

The mudflaps protect the lower part of the bodywork from scratches and mud or stones thrown up from the road.



4. NON-SLIP WOODEN FLOOR

The easy to install non-slip wooden floor effectively protects the loading area.



5. REAR DOOR GRILLES

To prevent theft, the windows are fitted with protective grilles, yet still provide good visibility.

6. ROOF BARS

The roof bars can bear a maximum load of 100kg.

7. SECURITY WHEEL TRIMS

To prevent them being lost or stolen, the Kangoo Van has wheel trims with a secure fastening system.

8. INNOVATIVE ROOF BARS

Converts without the use of tools into a luggage rack.



SCHEMATICS



KANGOO COMPACT



KANGOO VAN



NEW KANGOO VAN MAXI



KANGOO VAN - 1 OR 2 SIDE LOADING DOORS



KANGOO VAN - 1 OR 2 GLAZED SIDE LOADING DOORS



GREY BUMPERS AND DOOR MIRRORS



BODY COLOURED BUMPERS AND DOOR MIRRORS



UNGLAZED 180° ASYMMETRIC REAR DOORS



GLAZED 180° ASYMMETRIC REAR DOORS



GLAZED TAILGATE

CORE EQUIPMENT

Kangoo Compact

<p>Core Features - Standard on Kangoo Compact 'SL' Versions</p> <ul style="list-style-type: none"> • 3 year / 100k mile warranty • Front and rear grey bumpers • Grey side protection mouldings • 14" "Script" wheel trims • Black plastic flooring • Instrument panel with rev-counter • Dark carbon steering wheel (except where cruise control/speed limiter ordered then steering wheel is light grey) • Gear lever gaiter and gear knob in dark grey - 5-speed gearbox (except 1.5 dCi 105) 	<ul style="list-style-type: none"> • Full steel bulkhead • Four load anchorage points (floor mounted) • Front brake discs and rear brake drums (14" wheel) • ABS with EBD (Electronic Brake Distribution) • Driver's airbag • Front seatbelts with pretensioners and load limiters • Remote central locking (3 button key) • R.A.I.D. (Renault Anti Intruder Device) • Electronic immobiliser • Seatbelt warning sound 	<ul style="list-style-type: none"> • 2 x 15W radio CD with integrated display with fingertip control • 150amp alternator • 'Titanium' upholstery (dark fabric) • Unglazed vehicle without sliding side door • Unglazed 180° asymmetric rear doors • Interior manually adjustable exterior door mirrors (not available with Style Pack) • Overhead central light console • Load area lighting • 'See Me Home' headlamps • Height adjustable steering wheel • Driver foot rest 	<ul style="list-style-type: none"> • A4 storage in dashboard • Central storage tray between front seats • Closed glove box (not lockable) • Storage compartments in front doors • Overhead storage • Manual front windows • Electric variable power-assisted steering • Rev counter • Lights-on warning sound
<p>Additional Standard Equipment (to Core Features) on Kangoo Compact 'SL+'</p>	<ul style="list-style-type: none"> • Two additional side anchorage points in load area • Height adjustable driver's seat 	<ul style="list-style-type: none"> • Central storage console and armrest between seats 	<ul style="list-style-type: none"> • 2 x 15W radio CD with separate display with fingertip control

Kangoo Van

<p>Core Features - Standard on Kangoo Van 'ML' Versions</p> <ul style="list-style-type: none"> • 3 year / 100k mile warranty • Front and rear grey bumpers • Grey side protection mouldings • 15" "Script" wheel trims • Black plastic flooring • Instrument panel with rev counter • Dark carbon steering wheel (except where cruise control/speed limiter ordered then steering wheel is light grey) • Gear lever gaiter and gear knob in dark grey - 5-speed gearbox (except 1.5 dCi 105) 	<ul style="list-style-type: none"> • Full steel bulkhead • Six load anchorage points (floor mounted) • Two coat hooks (when full steel bulkhead in place) • Roof bar fixings • Roof rack fixings • Front and rear brake discs • ABS with EBD (Electronic Brake Distribution) • Front seatbelts with pretensioners and load limiters • Remote central locking (3 button key) • R.A.I.D. (Renault Anti Intruder Device) • Driver's airbag • Lights-on warning sound 	<ul style="list-style-type: none"> • Seatbelt warning sound • 150amp alternator • Front seatbelts with pretensioners and load limiters • Electronic immobiliser • 'Titanium' upholstery (dark fabric) • Unglazed 180° asymmetric rear doors • Interior manually adjustable exterior door mirrors (not available with Style Pack) Overhead central light console • Load area lighting • Height adjustable steering wheel • Driver foot rest 	<ul style="list-style-type: none"> • A4 storage in dashboard • Central storage tray between front seats • Closed glove box (not lockable) • Storage compartments in front doors • Overhead storage • Manual front windows • Pollen filter • 12V power socket on central console • Electric variable power-assisted steering • Rev counter • 2 x 15W radio CD with integrated display with fingertip control
<p>Kangoo Van 'ML+' - Additional Standard Equipment (to Core Features on ML)</p>	<ul style="list-style-type: none"> • 2-3 additional side anchorage points in load area (depending on no. of side loading doors) • Height adjustable driver's seat • Unglazed left side loading door (unglazed right panel and quarter panel) • Central storage console and armrest between seats • 2 x 20W radio CD MP3 with separate display, fingertip control and RCA connection 		

New Kangoo Van Maxi

<p>Core Features - Standard on New Kangoo Van 'Maxi' Versions</p> <ul style="list-style-type: none"> • Front and rear grey bumpers • Grey side protection mouldings • 15" "Script" wheel trims • 2 x 15W radio CD MP3 with integrated display, fingertip control and aux point • Black plastic flooring • Instrument panel with rev counter • Dark carbon steering wheel (except where cruise control/speed limiter ordered then steering wheel is light grey) • Gear lever gaiter and gear knob in dark grey - 5-speed gearbox (except 1.5 dCi 105) • Gear lever gaiter and gear knob in light grey - 6-speed gearbox (1.5 dCi 105) • 150amp alternator 	<ul style="list-style-type: none"> • Spare wheel • Three additional side anchorage points in load area (depending on no. of side loading doors) • Roof bar fixings • Roof rack fixings • Front and rear brake discs • ABS with EBD (Electronic Brake Distribution) • Driver's airbag • Front seatbelts with pretensioners and load limiters • Remote central locking and deadlocking • R.A.I.D. (Renault Anti Intruder Device) • Electronic immobiliser • Central storage tray between front seats • Electric variable power-assisted steering • Front seatbelts with pretensioners and load limiters • Rev counter 	<ul style="list-style-type: none"> • Remote central locking and deadlocking • Lights-on warning sound • R.A.I.D. (Renault Anti Intruder Device) • Seatbelt warning sound • Electronic immobiliser • Overhead parcel shelf • Central storage tray between front seats • Titanium upholstery (dark fabric) • Unglazed right side loading door (unglazed left rear panel and quarter panel) • Unglazed left side loading door (unglazed right panel and quarter panel) • Unglazed 180° asymmetric rear doors • Interior manually adjustable exterior door mirrors • Overhead central light console • Load area lighting 	<ul style="list-style-type: none"> • "See me home" headlights • Height adjustable steering wheel • Driver's foot rest • A4 storage in dashboard • Closed glove box (not lockable) • Storage compartments in front doors • Manual front windows • Pollen filter • 12V power socket on central console • Electric variable power-assisted steering • Rev counter • Lights-on warning sound • Seatbelt warning sound • Overhead parcel shelf
<p>New Kangoo Maxi 'LL' - Additional Standard Equipment (to Core Features)</p>	<ul style="list-style-type: none"> • Full steel bulkhead • Two coat hooks (when full steel bulkhead in place) 	<ul style="list-style-type: none"> • Eight load anchorage points (floor mounted) • Minimum lateral covering 	
<p>New Kangoo Maxi 'LL+' - Additional Standard Equipment (to 'LL')</p>	<ul style="list-style-type: none"> • Central storage console and armrest between seats • Carminat TomTom® 	<ul style="list-style-type: none"> • 2 x 20W radio CD3 with separate display, fingertip control and RCA connection 	
<p>New Kangoo Maxi 'Crew Van' - Additional Standard Equipment (to Core Features)</p>	<ul style="list-style-type: none"> • Full load area lining • Six load anchorage points (floor mounted) 	<ul style="list-style-type: none"> • Rear seats • Protective luggage net 	

For information on options and option packs, see the Options pages at the back of this brochure.

TRIMS, WHEELS AND COLOURS



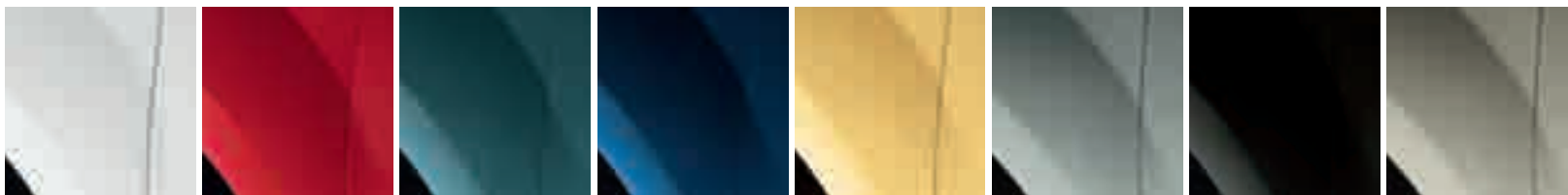
'Titanium' cloth upholstery



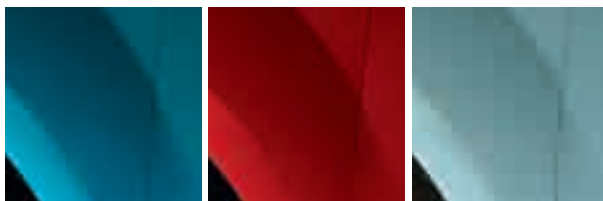
14" 'Script' wheels
(15" on Kangoo Van)

14" 'Kirov' wheel trims
(Kangoo Compact - optional)

15" 'Brigatin' wheel trims
(Kangoo Van - optional)



389 GLACIER WHITE (NM) 719 CARMEN RED (NM) KNF SAGE GREY (NM) RNQ PERSIAN BLUE (NM) ENG SOLAR YELLOW (NM) B64 COSMIC GREY (MI) GND JET BLACK (MI) C66 TOPAZ (MI)



J42 AQUA (MI) NNG OPORTO RED (MI) RNP SURF BLUE (MI)

NM = Non-metallic Supergloss MI = Metallic Illusion

It should be noted that printing limitations do not permit the subtle paintwork shades on these pages to be shown with absolute accuracy. Only personal inspection of the Kangoo Van at your Renault Dealer will reveal it in its true colours. From time to time changes are made to the colour range. Please check availability with your Renault Dealer.

	Non-metallic paint				
	Glacier White 389 (NM)	Carmen Red 719 (NM)	Sage Grey KNF (NM)	Persian Blue RNQ (NM)	Solar Yellow ENG (NM)
Kangoo Compact	●	●	●	●	●
Kangoo Van	●	●	●	●	●
New Kangoo Van Maxi	●	●	●	●	●

● = Standard ○ = Optional

	Metallic paint					
	Cosmic Grey B64 (MI)	Jet Black GND (MI)	Topaz C66 (MI)	Aqua J42 (MI)	Oporto Red NNG (MI)	Surf Blue RNP (MI)
	○	○	○	○	○	○
	○	○	○	○	○	○
	○	○	○	○	○	○

LOADSPACE AND DIMENSIONS

The New Kangoo Van Maxi has an external length comparable to an MPV and an exceptional load length.* The New Kangoo Van Maxi can carry two Euro-pallets (load volume 4 to 4.6m³). The Kangoo Van's length of 4.21m frees up an optimised load capacity of 3m³, while its interior width (1.21m between wheel arches) makes it possible to fit a Euro-pallet.

Hinged, asymmetrical rear doors and the sliding side loading doors (depending on version) give easy access to the cargo area. The Compact version uses space efficiently, with a maximum load capacity of 2.3m³ from an overall length of just 3.83m.

**2.88m maximum with front seat folded down, with swivelling bulkhead configuration only*



	Kangoo Compact	Kangoo Van	New Kangoo Van Maxi	New Kangoo Van Maxi Crew Van
Payload	500kg	650/800kg	800 kg	740 kg
Load volume	2.3m³	3.0m³	4.0m³ to 4.6m³	1.3m³ to 3.4m³
A Wheelbase	2313	2697	3081	3081
B Overall length	3829	4213	4597	4597
C Front overhang	807	807	807	807
D Rear overhang	709	709	709	709
E Front track width	1519	1521	1521	1521
F Rear track width	1533	1534	1533	1533
G Overall width (without mirrors)	1829	1829	1829	1829
G1 Overall width (with mirrors)	2133	2133	2133	2133
H Unladen height	1812	1805 to 1844	1810 to 1836	1802 to 1826
H1 Height with opened rear doors	1863	1872 to 1934	1893 to 1920	1878 to 1902
J Sill height	577	588 to 609	575 to 601	563 to 568
K Ground clearance (unladen)	191	184 to 210	187 to 212	185 to 210
K1 Ground clearance (laden)	164	153 to 172	151 to 171	151 to 171
M Elbow room	1508	1508	1508	1508 / 1539
N Front interior width	1462	1462	1462	1462 / 1511
Q1 Rear interior height	1227	1251	1252	1154
Y Rear width - top	1141	1141	1141	1141
Y1 Rear width - bottom	1219	1219	1219	1219
Y2 Width between wheel arches	1218	1218	1218	1145
Z Loading height	1130	1130	1129	1129
Z1 Loading length	1092	1476	1860	1008
Z2 Loading length at floor	1347	1731	2115 / 2886	1328 / 2210

Note: images above show Kangoo Van only, table gives measurements for Kangoo LCV range.

All measurements are in mm

TECHNICAL SPECIFICATIONS

	KANGOO COMPACT			KANGOO VAN		
	1.6 8V	1.5 dCi 70 ^{RENOULT} ^{eco}	1.5 dCi 85 ^{RENOULT} ^{eco}	1.6 8V	1.6 16V	1.6 16V Automatic
ENGINE						
Engine capacity (cc)	1598	1461	1461	1598	1598	1598
Injection type	Multipoint	Direct (Turbo) Commonrail	Direct (Turbo) Commonrail	Multipoint	Multipoint	Multipoint
Fuel type	Petrol	Diesel	Diesel	Petrol	Petrol	Petrol
Number of cylinders	4	4	4	4	4	4
Number of valves	8	8	8	8	16	16
Max engine power kW (hp) rpm	64 (90)	50 (70)	63 (90)	64 (90)	78 (105)	78 (105)
Max torque Nm (rpm)	128 (3750)	160 (1700)	200 (1900)	128 (3750)	148 (3750)	148 (3750)
GEARBOX						
Type	JH3	JH3	JR5	JR5	JR5	DP0
Number of forward gears	5	5	5	5	5	4
Vehicle speed at 1000 rpm: in 1st gear mph (kph)	6.8 (4.22)	8.34 (5.18)	8.2 (5.09)	4.3 (6.92)	4.44 (7.15)	5.63 (9.06)
Vehicle speed at 1000 rpm: in 2nd gear mph (kph)	12.39 (7.69)	15.06 (9.353)	14.93 (9.27)	7.82 (12.59)	8.08 (13.01)	10.23 (16.46)
Vehicle speed at 1000 rpm: in 3rd gear mph (kph)	18.21 (11.31)	21.24 (13.19)	23.13 (14.37)	12.12 (19.51)	11.88 (19.12)	15.33 (24.67)
Vehicle speed at 1000 rpm: in 4th gear mph (kph)	24.64 (15.31)	27.26 (16.93)	31.47 (19.55)	16.5 (26.55)	15.09 (24.28)	21.58 (34.72)
Vehicle speed at 1000 rpm: in 5th gear mph (kph)	30.91 (19.20)	35.3 (21.93)	40.43 (25.12)	19.43 (31.43)	18.56 (29.86)	-
Vehicle speed at 1000 rpm: in 6th gear mph (kph)	-	-	-	-	-	-
STEERING						
Turning circle between kerbs (m)	9.6	9.6	9.6	10.7	10.7	10.7
Steering wheel turns lock to lock	3.15	3.2	3.15	3.15	3.15	3.15
DRIVE TRAIN						
Type	Traction	Traction	Traction	Traction	Traction	Traction
WHEELS						
Tyre size	185/70 R14 LI88	185/70 R14 LI88	185/70 R14 LI88	195/65 R15 LI91	195/65 R15 LI91	195/65 R15 LI91
BRAKING SYSTEM						
Front disc brakes (mm)	258	258	258	280	280	280
Rear drum (T) or disc (mm)	T9"	T9"	T9"	274	274	274
PERFORMANCE						
Maximum speed (mph)	98	90	99	98	106	101
Acceleration 0-62 mph (seconds)	13.9	19.5	14.2	15.8	13	14.3
FUEL CONSUMPTION						
CO2 emissions (g/km)	188	140	129	190	186	195
Urban cycle mpg (litres/100km)	27.2 (10.4)	47.9 (5.9)	47.8 (5.6)	25.9 (10.5)	27.2 (10.4)	25 (11.3)
Extra Urban cycle mpg (litres/100km)	43.5 (6.5)	56.5 (5)	62.7 (4.5)	42.2(6.6)	46.3 (6.1)	43.5 (6.5)
Combined cycle mpg (litres/100km)	35.3 (8)	53.3 (5.3)	57.8 (4.9)	34.5(8.2)	36.7 (7.7)	34 (8.3)
FUEL TANK CAPACITY						
Fuel tank capacity gallons (litres)	13.2 (60)	13.2 (60)	13.2 (60)	13.2 (60)	13.2 (60)	13.2 (60)
WEIGHTS*						
Kerb weight (kg)	1188 / 1205	1236 / 1251	1241 / 1256	1213	1248	1287
Gross vehicle weight (kg)	1715	1755	1760	1880	1917	1949
Gross train weight (kg)	2765	2805	2810	2930	2967	2999
Maximum payload (kg)	500	500	500	650	650	650
Real maximum payload (kg)	527 / 510	519 / 504	519 / 504	667	669	662
Unbraked trailer capacity (kg)	634	615	620	605	620	640
Braked trailer capacity (kg)	1050	1050	1050	1050	1050	1050

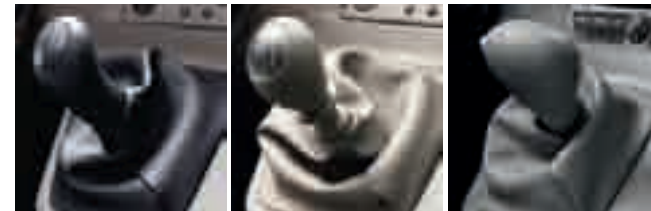
* Where two figures are shown, the first figure relates to Kangoo Van with standard payload, and the second figure relates to Kangoo Van with increased payload



New Kangoo Commercial Vehicle range carrying the ^{RENOULT} ^{eco} symbol meets three criteria: they produce CO₂ emissions at or lower than 140 g/km (as low as 129 g/km on the dCi 85 engine), they are manufactured at Maubeuge, an ISO 14001 certified factory, minimising their environmental impact, and they are 95% recyclable with 6% recycled plastic in their plastic mass.

With ^{RENOULT} ^{eco}, Renault displays its environmental commitment at every stage of the life cycle of the vehicle. The vehicle has been designed in such a way that 95% of the materials used could have a second life (recyclable for other use or as a source of energy), and that pollution control at the end of the vehicle's life (in particular extraction of fluids) is made easier. Furthermore, this vehicle has parts made of recycled plastic and renewable materials.

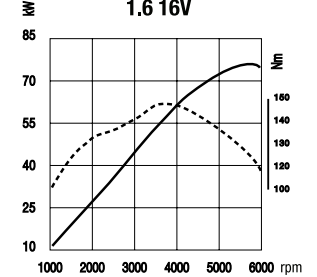
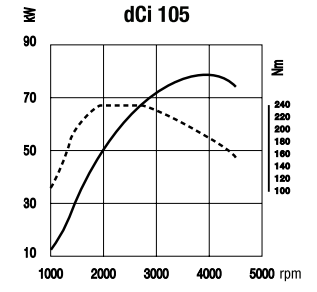
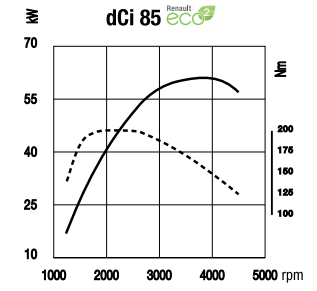
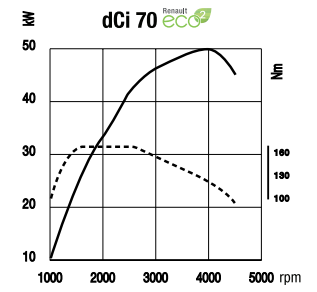
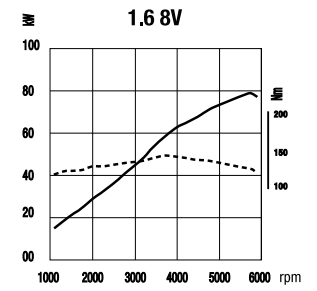
	KANGOO VAN			NEW KANGOO VAN MAXI		NEW KANGOO VAN MAXI CREW VAN
	1.5 dCi 70 ^{RENOULT} ^{eco}	1.5 dCi 85 ^{RENOULT} ^{eco}	1.5 dCi 105	1.5 dCi 85 ^{RENOULT} ^{eco}	1.5 dCi 105	1.5 dCi 85 ^{RENOULT} ^{eco}
	1461	1461	1461	1,461	1,461	1,461
Direct (Turbo) Commonrail	Direct (Turbo) Commonrail	Direct (Turbo) Commonrail	Direct (Turbo) Commonrail	Direct (Turbo) Commonrail	Direct (Turbo) Commonrail	Direct (Turbo) Commonrail
Diesel	Diesel	Diesel	Diesel	Diesel	Diesel	Diesel
4	4	4	4	4	4	4
8	8	8	8	8	8	8
50 (70)	63 (85)	78 (105)	78 (105)	63 (85)	78 (105)	63 (85)
160 (1700)	200 (1900)	240 (2000)	240 (2000)	200 (1900)	240 (2000)	200 (1900)
	JR5	JR5	TL4	JR5	TL4	JR5
5	5	6	6	5	6	5
4.59 (7.39)	5 (8.05)	4.92 (7.92)	4.92 (7.92)	5 (8.05)	4.92 (7.92)	5 (8.05)
8.36 (13.45)	9.11 (14.66)	9.41 (15.15)	9.41 (15.15)	9.11 (14.66)	9.41 (15.15)	9.11 (14.66)
12.95 (20.84)	14.11 (22.71)	13.86 (22.31)	13.86 (22.31)	14.11 (22.71)	13.86 (22.31)	14.11 (22.71)
17.61 (28.34)	19.20 (30.89)	18.8 (30.26)	18.8 (30.26)	19.20 (30.89)	18.8 (30.26)	19.20 (30.89)
22.63 (36.42)	25.27 (40.66)	24.02 (38.66)	24.02 (38.66)	25.27 (40.66)	24.02 (38.66)	25.27 (40.66)
-	-	28.72 (46.22)	28.72 (46.22)	-	28.72 (46.22)	-
	10.7	10.7	10.7	11.9	11.9	11.9
	3.15	3.15	3.15	3.2	3.2	3.2
	Traction	Traction	Traction	Traction	Traction	Traction
	195/65 R15 LI91	195/65 R15 LI91	195/65 R15 LI91	195/65 R15 LI95	195/65 R15 LI95	195/65 R15 LI95
	280	280	280	280	280	280
	274	274	274	274	274	274
	91	98	106	98	106	98
	20.3	16	13	16.0	13.0	16.0
	140	130	142	140	146	140
	47.9 (5.9)	47.8 (5.6)	44.8 (6.3)	47.9 (5.9)	44.1(6.4)	47.9 (5.9)
	56.5 (5)	61.4 (4.6)	57.7 (4.9)	56.5 (5)	56.5 (5)	56.5 (5)
	53.3 (5.3)	57.6 (4.9)	52.3 (5.4)	53.3(5.3)	51.4 (5.5)	53.3(5.3)
	13.2 (60)	13.2 (60)	13.2 (60)	13.2 (60)	13.2 (60)	13.2 (60)
	1251	1251	1287	1320 / 1327	1328 / 1345	1402 / 1405
	1918	1918	1952	2155	2178	2155
	2968	2968	3002	3205	3228	3205
	650	650	650	800	800	740
	667	667	665	835 / 828	850 / 833	753 / 750
	620	625	640	655 / 660	660 / 670	700
	1050	1050	1050	1050	1050	1050



With two petrol engines on offer, plus a range-topping 1.5 dCi 105 with 6-speed gearbox in its class, Kangoo Van offers an engine to meet all types of fuel economy and performance requirements.

— Power
- - - - Torque

ENGINES



OPTIONS

	KANGOO COMPACT			
		SL	SL+	
EXTERIOR				
Metallic paint	<input type="checkbox"/>	<input type="checkbox"/>	<input type="checkbox"/>	
14" "Kirov" wheel trims	-	<input type="checkbox"/>	<input type="checkbox"/>	
Body coloured door mirrors ⁽¹⁾	<input type="checkbox"/>	<input type="checkbox"/>	<input type="checkbox"/>	
Body coloured bumpers and mirrors ⁽²⁾	-	<input type="checkbox"/>	<input type="checkbox"/>	
LOADING				
Load area rubber floor covering	<input type="checkbox"/>	<input type="checkbox"/>	<input type="checkbox"/>	
Full load area lining	<input type="checkbox"/>	<input type="checkbox"/>	<input type="checkbox"/>	
2 additional side anchorage points in load area	<input type="checkbox"/>	<input type="checkbox"/>	<input checked="" type="checkbox"/>	
SAFETY AND SECURITY				
Front passenger airbag (can be deactivated)	<input type="checkbox"/>	<input type="checkbox"/>	<input type="checkbox"/>	
Front lateral airbag (thorax) (must be ordered with front passenger airbag and height adjustable driver's seat)	<input type="checkbox"/>	<input type="checkbox"/>	<input type="checkbox"/>	
Cruise control with speed limiter (comes with rev counter, chrome dials and light grey steering wheel) ⁽³⁾	<input type="checkbox"/>	<input type="checkbox"/>	<input type="checkbox"/>	
Engine speed limiter (56mph/90kmh, 62mph/100kmh, 68mph/110kmh)	<input type="checkbox"/>	<input type="checkbox"/>	<input type="checkbox"/>	
Tubular bulkhead behind driver's seat (In lieu of full steel bulkhead)	<input type="checkbox"/>	<input type="checkbox"/>	<input type="checkbox"/>	
Swivelling bulkhead*	<input type="checkbox"/>	<input type="checkbox"/>	<input type="checkbox"/>	
SEATS				
"Vollige" upholstery (vinyl)	<input type="checkbox"/>	-	-	
Height adjustable driver's seat	<input type="checkbox"/>	<input checked="" type="checkbox"/>	<input type="checkbox"/>	
Folding passenger seat*	<input type="checkbox"/>	<input type="checkbox"/>	<input type="checkbox"/>	
DOORS AND WINDOWS				
Glazed tailgate and rear wiper	<input type="checkbox"/>	<input type="checkbox"/>	<input type="checkbox"/>	
Glazed 180° asymmetric rear doors with rear wiper and rear heated window	<input type="checkbox"/>	<input type="checkbox"/>	<input type="checkbox"/>	
Sliding rear roof flap (must be ordered with glazed/unglazed rear doors)	<input type="checkbox"/>	<input type="checkbox"/>	<input type="checkbox"/>	
Extra tinted glass in rear windows	<input type="checkbox"/>	<input type="checkbox"/>	<input type="checkbox"/>	
VISIBILITY				
Electric heated door mirrors ⁽⁴⁾	<input type="checkbox"/>	<input type="checkbox"/>	<input type="checkbox"/>	
Front fog lights	<input type="checkbox"/>	<input type="checkbox"/>	<input type="checkbox"/>	
COMFORT AND STORAGE				
Central console with plastic armrest	<input type="checkbox"/>	<input checked="" type="checkbox"/>	<input type="checkbox"/>	
Manual air conditioning	<input type="checkbox"/>	<input type="checkbox"/>	<input type="checkbox"/>	
Automatic headlights and wipers ⁽⁵⁾	-	<input type="checkbox"/>	<input type="checkbox"/>	
Electric windows (driver's side one-touch descending)	<input type="checkbox"/>	<input type="checkbox"/>	<input type="checkbox"/>	
DRIVING				
Trip computer with digital display	<input type="checkbox"/>	<input type="checkbox"/>	<input type="checkbox"/>	
Rear parking sensors	-	<input type="checkbox"/>	<input type="checkbox"/>	
COMMUNICATION				
Carminat TomTom ⁽⁶⁾	<input type="checkbox"/>	<input checked="" type="checkbox"/>	<input type="checkbox"/>	
Carminat TomTom map upgrade - Europe ⁽⁷⁾ (available from June 2010)	<input type="checkbox"/>	<input type="checkbox"/>	<input type="checkbox"/>	
2 x 15W radio CD MP3 with integrated display, fingertip control and aux point	<input checked="" type="checkbox"/>	<input type="checkbox"/>	<input type="checkbox"/>	
2 x 20W radio CD MP3 with separate display, fingertip control and RCA connection	<input type="checkbox"/>	<input checked="" type="checkbox"/>	<input type="checkbox"/>	
2 x 20W radio CD MP3 Bluetooth with aux point and separate display	-	<input type="checkbox"/>	<input type="checkbox"/>	
OPTION PACKS				
Air Con + Pack - Manual air conditioning / Electric windows (driver's side one-touch descending) / Electric heated door mirrors / Body coloured door mirrors	<input type="checkbox"/>	<input type="checkbox"/>	<input type="checkbox"/>	
Convenience Pack - Electric windows (driver's side one-touch descending) / Electric heated door mirrors / Body coloured door mirrors	<input type="checkbox"/>	<input type="checkbox"/>	<input type="checkbox"/>	
● = Standard (therefore no cost) <input type="checkbox"/> = Optional - = Not available (1) Must be ordered with electric heated door mirrors (2) Must be ordered with electric heated door mirrors, 14" "Kirov" wheel trims and front fog lights (3) Must be ordered with trip computer (4) Must be ordered with electric windows (5) Must be ordered with front fog lights (6) Must be ordered with central console with plastic armrest and 2 x 20W radio CD MP3 with separate display, fingertip control and RCA connection (7) Must be ordered with Carminat TomTom ⁽⁶⁾ † = We recommend the use of high tack adhesive decals after ktar G-3 Glasscoat has been applied to your van. * Swivelling bulkhead and folding passenger seat must be ordered together.				
	KANGOO VAN			
		ML	EXTRA	ML+
EXTERIOR				
Metallic paint	<input type="checkbox"/>	<input type="checkbox"/>	<input type="checkbox"/>	<input type="checkbox"/>
15" "Brigantin" wheel trims	-	-	<input type="checkbox"/>	<input type="checkbox"/>
Body coloured door mirrors ⁽¹⁾	<input type="checkbox"/>	<input checked="" type="checkbox"/>	<input type="checkbox"/>	<input type="checkbox"/>
Body coloured bumpers and mirrors ⁽²⁾	-	-	<input type="checkbox"/>	<input type="checkbox"/>
LOADING				
Load area rubber floor covering	<input type="checkbox"/>	<input type="checkbox"/>	<input type="checkbox"/>	<input type="checkbox"/>
Full load area lining	<input type="checkbox"/>	<input type="checkbox"/>	<input type="checkbox"/>	<input type="checkbox"/>
2-3 additional side anchorage points in load area (depending on number of side loading doors)	<input type="checkbox"/>	<input type="checkbox"/>	<input type="checkbox"/>	<input checked="" type="checkbox"/>
SAFETY AND SECURITY				
ESP (Electronic Stability Programme) with Traction Control and Understeer Control (not available on 1.5 dCi 70)	-	-	-	<input type="checkbox"/>
Front passenger airbag (can be deactivated)	<input type="checkbox"/>	<input type="checkbox"/>	<input type="checkbox"/>	<input type="checkbox"/>
Front lateral airbag (thorax) (must be ordered with front passenger airbag and height adjustable driver's seat)	<input type="checkbox"/>	<input type="checkbox"/>	<input type="checkbox"/>	<input type="checkbox"/>
Cruise control with speed limiter (comes with rev counter, chrome dials and light grey steering wheel) ⁽³⁾	<input type="checkbox"/>	<input type="checkbox"/>	<input type="checkbox"/>	<input type="checkbox"/>
Engine speed limiter (56mph/90kmh, 62mph/100kmh, 68mph/110kmh)	<input type="checkbox"/>	<input type="checkbox"/>	<input type="checkbox"/>	<input type="checkbox"/>
Tubular bulkhead behind driver's seat (In lieu of full steel bulkhead)	<input type="checkbox"/>	<input checked="" type="checkbox"/>	<input type="checkbox"/>	<input type="checkbox"/>
Tyre repair kit (available from June 2010) ⁽⁴⁾	<input type="checkbox"/>	<input type="checkbox"/>	<input type="checkbox"/>	<input type="checkbox"/>
Swivelling bulkhead*	<input type="checkbox"/>	<input type="checkbox"/>	<input type="checkbox"/>	<input type="checkbox"/>
Full steel bulkhead	<input checked="" type="checkbox"/>	<input type="checkbox"/>	<input type="checkbox"/>	<input checked="" type="checkbox"/>
SEATS				
Folding passenger seat*	<input type="checkbox"/>	<input type="checkbox"/>	<input type="checkbox"/>	<input type="checkbox"/>
"Vollige" upholstery (vinyl)	<input type="checkbox"/>	<input type="checkbox"/>	-	-
Height adjustable driver's seat	<input type="checkbox"/>	<input type="checkbox"/>	<input type="checkbox"/>	<input checked="" type="checkbox"/>
DOORS AND WINDOWS				
Unglazed right side loading door (unglazed left rear panel and quarter panel)	-	-	-	<input type="checkbox"/>
Unglazed left side loading door (unglazed right panel and quarter panel)	<input type="checkbox"/>	<input type="checkbox"/>	<input type="checkbox"/>	<input checked="" type="checkbox"/>
Left glazed side loading door (unglazed right panel and quarter panel)	<input type="checkbox"/>	<input type="checkbox"/>	-	-
Left glazed side loading door (unglazed right panel and quarter panel)	-	-	-	<input type="checkbox"/>
2 glazed sliding side doors, unglazed quarter panel (must be ordered with glazed rear doors or glazed tailgate)	-	-	-	<input type="checkbox"/>
Glazed tailgate and rear wiper	<input type="checkbox"/>	<input type="checkbox"/>	-	<input type="checkbox"/>
Glazed 180° asymmetric rear doors with rear wiper and rear heated window	<input type="checkbox"/>	<input type="checkbox"/>	<input type="checkbox"/>	<input type="checkbox"/>
Sliding rear roof flap (must be ordered with glazed/unglazed rear doors)	<input type="checkbox"/>	<input type="checkbox"/>	<input type="checkbox"/>	<input type="checkbox"/>

36 > **37**

	KANGOO VAN continued		
Extra tinted glass in rear windows	<input type="checkbox"/>	<input type="checkbox"/>	<input type="checkbox"/>
VISIBILITY			
Electric heated door mirrors ⁽³⁾	<input type="checkbox"/>	<input checked="" type="checkbox"/>	<input type="checkbox"/>
Front fog lights	<input type="checkbox"/>	<input type="checkbox"/>	<input type="checkbox"/>
COMFORT AND STORAGE			
Central console with plastic armrest	<input type="checkbox"/>	<input type="checkbox"/>	<input checked="" type="checkbox"/>
Manual air conditioning	<input type="checkbox"/>	<input checked="" type="checkbox"/>	<input type="checkbox"/>
Automatic headlights and wipers ⁽⁴⁾	-	-	<input type="checkbox"/>
Electric windows (driver's side one-touch descending)	<input type="checkbox"/>	<input checked="" type="checkbox"/>	<input type="checkbox"/>
DRIVING			
Trip computer with digital display	<input type="checkbox"/>	<input type="checkbox"/>	<input type="checkbox"/>
Rear parking sensors	-	-	<input type="checkbox"/>
COMMUNICATION			
Carminat TomTom ⁽⁵⁾	<input type="checkbox"/>	<input type="checkbox"/>	<input checked="" type="checkbox"/>
Carminat TomTom map upgrade - Europe ⁽⁷⁾ (available from June 2010)	<input type="checkbox"/>	<input type="checkbox"/>	<input type="checkbox"/>
2 x 15W radio CD MP3 with integrated display, fingertip control and aux point	<input checked="" type="checkbox"/>	<input checked="" type="checkbox"/>	<input type="checkbox"/>
2 x 20W radio CD MP3 with separate display, fingertip control and RCA connection	<input type="checkbox"/>	<input type="checkbox"/>	<input checked="" type="checkbox"/>
2 x 20W radio CD MP3 Bluetooth with aux point and separate display	-	-	<input type="checkbox"/>
OPTION PACKS			
Air Con + Pack - Manual air conditioning / Electric windows (driver's side one-touch descending) / Electric heated door mirrors / Body coloured door mirrors	<input type="checkbox"/>	<input checked="" type="checkbox"/>	<input type="checkbox"/>
Convenience Pack - Electric windows (driver's side one-touch descending) / Electric heated door mirrors / Body coloured door mirrors	<input type="checkbox"/>	-	<input type="checkbox"/>
● = Standard (therefore no cost) <input type="checkbox"/> = Optional - = Not available (1) Must be ordered with electric heated door mirrors (2) Must be ordered with electric heated door mirrors, 15" "Brigantin" wheel trims and front fog lights (3) Must be ordered with electric windows (4) Must be ordered with front fog lights (5) Must be ordered with central console with plastic armrest and 2 x 20W radio CD MP3 with separate display, fingertip control and RCA connection (6) Must be ordered with trip computer (7) Must be ordered with Carminat TomTom ⁽⁵⁾ (8) In lieu of spare wheel † = We recommend the use of high tack adhesive decals after ktar G-3 Glasscoat has been applied to your van. * Swivelling bulkhead and folding passenger seat must be ordered together.			

	NEW KANGOO VAN MAXI			
		LL	LL+	CREW VAN
EXTERIOR				
Metallic paint	<input type="checkbox"/>	<input type="checkbox"/>	<input type="checkbox"/>	<input type="checkbox"/>
15" "Brigantin" wheel trims	-	<input type="checkbox"/>	-	-
Body coloured door mirrors ⁽¹⁾	<input type="checkbox"/>	<input type="checkbox"/>	<input type="checkbox"/>	<input type="checkbox"/>
Body coloured bumpers and mirrors ⁽²⁾	-	<input type="checkbox"/>	-	-
BULKHEADS				
Tubular bulkhead behind driver's seat (in lieu of full steel bulkhead)	<input type="checkbox"/>	<input type="checkbox"/>	-	-
Fixed grilled bulkhead on the back of rear seats	-	-	-	<input type="checkbox"/>
Swivelling bulkhead ⁽³⁾	<input type="checkbox"/>	<input type="checkbox"/>	-	-
LOADING				
Load area rubber floor covering	<input type="checkbox"/>	<input type="checkbox"/>	-	-
Full load area lining	<input type="checkbox"/>	<input type="checkbox"/>	<input checked="" type="checkbox"/>	<input type="checkbox"/>
SAFETY AND SECURITY				
Front passenger airbag (can be deactivated)	<input type="checkbox"/>	<input type="checkbox"/>	<input type="checkbox"/>	<input type="checkbox"/>
Front lateral airbag (thorax) (must be ordered with front passenger airbag and height adjustable driver's seat)	<input type="checkbox"/>	<input type="checkbox"/>	<input type="checkbox"/>	<input type="checkbox"/>
Cruise control with speed limiter (comes with rev counter, chrome dials and light grey steering wheel) ⁽⁴⁾	<input type="checkbox"/>	<input type="checkbox"/>	<input type="checkbox"/>	<input type="checkbox"/>
Engine speed limiter (56mph/90kmh, 62mph/100kmh, 68mph/110kmh)	<input type="checkbox"/>	<input type="checkbox"/>	-	-
Rear curtain airbag	-	-	-	<input type="checkbox"/>
Tyre repair kit (available from June 2010) ⁽¹¹⁾	<input type="checkbox"/>	<input type="checkbox"/>	<input type="checkbox"/>	<input type="checkbox"/>
SEATS				
Folding passenger seat ⁽⁵⁾	<input type="checkbox"/>	<input type="checkbox"/>	-	-
Height adjustable driver's seat	<input type="checkbox"/>	<input type="checkbox"/>	-	-
DOORS AND WINDOWS				
Two glazed sliding side doors, unglazed quarter panel (must be ordered with glazed rear doors) ⁽⁶⁾⁽⁸⁾	<input type="checkbox"/>	<input type="checkbox"/>	<input type="checkbox"/>	<input type="checkbox"/>
Two glazed sliding side doors, unglazed quarter panel (without glazed rear doors - CREW VAN ONLY) ⁽⁶⁾⁽⁸⁾	-	-	-	<input type="checkbox"/>
Glazed 180° asymmetric rear doors with rear wiper and rear heated window	<input type="checkbox"/>	<input type="checkbox"/>	<input type="checkbox"/>	<input type="checkbox"/>
Extra tinted glass in rear windows	<input type="checkbox"/>	<input type="checkbox"/>	<input type="checkbox"/>	<input type="checkbox"/>
VISIBILITY				
Electric heated door mirrors ⁽⁷⁾	<input type="checkbox"/>	<input type="checkbox"/>	<input type="checkbox"/>	<input type="checkbox"/>
Side lighting (rear interior)	<input type="checkbox"/>	<input type="checkbox"/>	-	-
Front fog lights	<input type="checkbox"/>	<input type="checkbox"/>	<input type="checkbox"/>	<input type="checkbox"/>
COMFORT AND STORAGE				
Central storage console and armrest between seats	<input type="checkbox"/>	<input checked="" type="checkbox"/>	<input type="checkbox"/>	<input type="checkbox"/>
Manual air conditioning	<input type="checkbox"/>	<input type="checkbox"/>	<input type="checkbox"/>	<input type="checkbox"/>
Automatic headlights and wipers ⁽⁹⁾	-	<input type="checkbox"/>	-	-
Climate control ⁽⁷⁾	-	<input type="checkbox"/>	-	-
Electric windows (driver's side one-touch descending)	<input type="checkbox"/>	<input type="checkbox"/>	<input type="checkbox"/>	<input type="checkbox"/>
Smoker Pack	<input type="checkbox"/>	<input type="checkbox"/>	<input type="checkbox"/>	<input type="checkbox"/>
DRIVING				
Trip computer with digital display	<input type="checkbox"/>	<input type="checkbox"/>	<input type="checkbox"/>	<input type="checkbox"/>
Rear parking sensors	-	<input type="checkbox"/>	-	-
COMMUNICATION				
2 x 15W radio CD MP3 with integrated display, fingertip control and aux point	<input checked="" type="checkbox"/>	<input type="checkbox"/>	<input checked="" type="checkbox"/>	<input type="checkbox"/>
2 x 20W radio CD MP3 with separate display, fingertip control and RCA connection	<input type="checkbox"/>	<input checked="" type="checkbox"/>	<input type="checkbox"/>	<input type="checkbox"/>
2 x 20W radio CD MP3 Bluetooth with aux point and separate display	-	<input type="checkbox"/>	-	-
Carminat TomTom ⁽⁹⁾	<input type="checkbox"/>	<input checked="" type="checkbox"/>	<input type="checkbox"/>	<input type="checkbox"/>
Carminat TomTom map upgrade - Europe (available from June 2010) ⁽¹⁰⁾	<input type="checkbox"/>	<input type="checkbox"/>	<input type="checkbox"/>	<input type="checkbox"/>
OPTION PACKS				
Air Con + Pack				
Manual air conditioning	<input type="checkbox"/>	<input type="checkbox"/>	<input type="checkbox"/>	<input type="checkbox"/>
Electric windows (driver's side one-touch descending)	<input type="checkbox"/>	<input type="checkbox"/>	<input type="checkbox"/>	<input type="checkbox"/>
Electric heated door mirrors	<input type="checkbox"/>	<input type="checkbox"/>	<input type="checkbox"/>	<input type="checkbox"/>
Body coloured door mirrors	<input type="checkbox"/>	<input type="checkbox"/>	<input type="checkbox"/>	<input type="checkbox"/>
Convenience Pack				
Electric windows (driver's side one-touch descending)	<input type="checkbox"/>	<input type="checkbox"/>	<input type="checkbox"/>	<input type="checkbox"/>
Electric heated door mirrors	<input type="checkbox"/>	<input type="checkbox"/>	<input type="checkbox"/>	<input type="checkbox"/>
Body coloured door mirrors	<input type="checkbox"/>	<input type="checkbox"/>	<input type="checkbox"/>	<input type="checkbox"/>

● = Standard (therefore no cost) = Optional - = Not available
1) Must be ordered with folding passenger seat.
2) Must be ordered with electric windows, front fogs, electric folding mirrors and 15" wheel trims.
3) Must be ordered with folding passenger seat.
Note: when ordered with swivelling bulkhead, the folding passenger seat does not require the centre console to be ordered.
4) Must be ordered with trip computer.
5) Folding passenger seat must be ordered with centre console with armrest on LL versions.
(6) and (8) **PLEASE NOTE: FOR CREW VAN ONLY – THE INLAND REVENUE VIEW CREW VANS WITH GLAZED REAR SIDE DOORS AS PASSENGER VEHICLES RATHER THAN LIGHT COMMERCIAL VEHICLES. YOU ARE STRONGLY ADVISED TO CONTACT YOUR LOCAL TAX AUTHORITY**
7) Must be ordered with electric windows.
8) Must be ordered with front fogs.
9) Must be ordered with centre console with armrest and either 2 x 20W radio CD MP3 with separate display, fingertip control and RCA connection.
10) Must be ordered with Carminat TomTom (where Carminat TomTom is not already standard) - please see Renault TomTom Guide for further information.
(11) In lieu of spare wheel.
* Climate control must be ordered with auto lights and wipers, front fogs, swivelling/tubular bulkhead (+ passenger seat if swivelling), electric windows, and body coloured bumpers and mirrors (climate control is available for a short time only).

RENAULT PRO+, THE ONE-STOP SHOP FOR BUSINESS CUSTOMERS

A specialist centre dedicated to business customers

Renault has developed Renault Pro+ to enhance the services offered to business customers.

One stop shop: customised for your business activities

From helping you choose the most appropriate vehicles and then supporting your business throughout their lifetime, your Renault Pro+ centre has put in place all the personalised services and technical expertise that you will ever need.

Representatives in tune with your business

Whether you are looking for technical advice on commercial vehicles or financial advice for funding your fleet, our people will have the expertise to deliver the right solution for your business.

An improved service

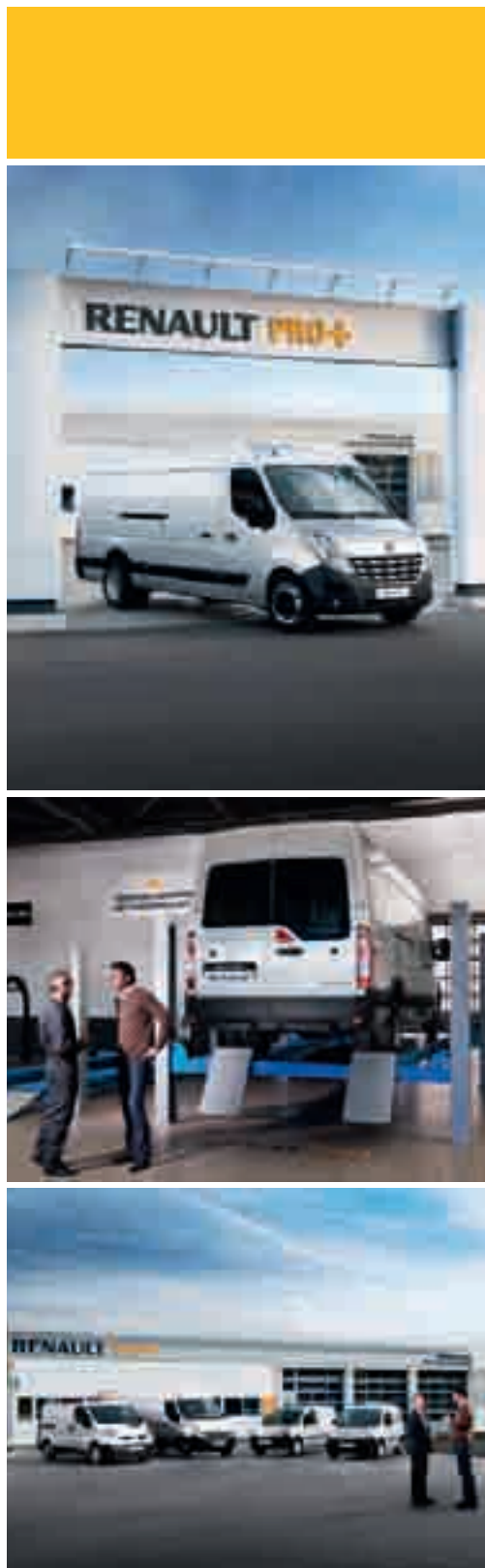
The new Renault Pro+ centres will enable participating dealerships to deliver even greater standards of service quality for sales and aftersales to business customers including:

Vehicle Sales

- A large display of brand new and used vehicles including a selection of converted vehicles
- A wider choice of vehicles to test drive, usually available without appointment
- A business proposal within 48 hours, including funding options

Vehicle Aftersales

- Extended workshop times, reserved for business customers
 - Within the hour diagnostics
 - Maintenance without appointment during daily working hours
 - Mobility solutions to keep your business moving
- A total of 22 sites will be opening across the UK throughout 2009 and 2010. To get directions and contact details for Renault Pro+ dealers please go to www.renault.co.uk/pro+



WHO BETTER THAN RENAULT TO SERVICE YOUR RENAULT?

Your new Renault is covered by a 3-year warranty package – the first 2 years of unlimited mileage Renault manufacturer warranty, followed by a further year of cover up to 60,000 or 100,000 miles.[†] This requires full servicing history according to Renault UK approved current standards. Paintwork is also guaranteed for 3 years while the anti-corrosion warranty runs for 12 years (Master anti-corrosion warranty runs for 6 years). In addition, the Renault Assistance plan (via the AA) ensures prompt help in the UK and Northern Ireland for manufacturer defects for 24 months (36 months for light commercial vehicles, or cars registered before 1st September 2006).

[†] 60,000 miles for Kangoo Van
100,000 miles for Traffic and Master

FINANCE OPTIONS

There are a wide variety of ways in which the purchase of a new car can be financed. Renault Finance offers all of them, so whether you're a fleet buyer or a private buyer, Renault Finance is ideally placed to tell you which plan or combination of plans best suits your needs and circumstances.

SERVICE INTERVALS

25,000 miles / 2 years:

- New Master all engines

18,000 miles / 2 years:

- Kangoo Van dCi 105

12,000 miles / 2 years:

- Kangoo Van dCi 70 and 85 engines
- Traffic all engines

18,000 miles / 1 year:

- Master all engines

- Kangoo Van 1.6 16V engine

12,000 miles / 1 year:

- Kangoo Van 1.6 8V engine

ENGINES WITH OIL CONTROL SYSTEM (OCS)

Kangoo, Master and Traffic diesel engines. OCS monitors driving conditions that directly affect the quality of your engine oil, protecting your engine from excessive wear and possible bearing failure. Under certain conditions; low speeds, traffic jams, door-to-door deliveries (engine turning with little distance travelled) or in high gear for long periods e.g. sport driving, towing a caravan/trailer over 500kg (engine turning at higher revolutions) the vehicle's service interval may be shortened and you will be alerted, via the instrument panel service indicator, that a Renault Service is required earlier (refer to driver's handbook for details).

EXTENDING YOUR WARRANTIES AND COVER

Renault Extended Warranty allows you to extend your Renault Warranty up to 5 years or 80,000 miles.

Renault Assistance Added Cover provides you with additional cover for incidents not covered by Renault Assistance: punctures, incorrect (or lack of) fuel, keys lost, stolen or locked inside the vehicle and incidents involving caravans or trailers.

For full information on these products please ask your Renault Dealer or log on to www.renault.co.uk and click on 'Owner Services', where you can also buy securely online.

SERVICE PLANS

Renault Service Plans are available on new and used vehicles[#] and allow you to budget for your vehicle's servicing with convenient payment options and inflation proof pricing. For more information please ask your Renault Dealer or log on to www.renault.co.uk and click on 'Owner Services'.

[#] participating dealers only

RENAULT NETWORK SERVICES

No-one is better placed than Renault to maintain, fit and repair your Renault, fast. The Renault Minute (maintenance and repair with no appointment necessary) and Renault Rapide Bodycare (bumper scuffs, dings and dents,

windscreen, stone chips and interior repairs...) services deliver the highest level of repair and maintenance and offer a full year's guarantee on Original Renault Parts. And don't forget to have a look at our wide range of additional equipment and accessories!

RENAULT VAN INSURANCE

Not just a solution, *the* solution.

A van as well designed as your Renault deserves an insurance policy to match. Renault Van Insurance has been specifically created to provide superb protection for you and your van. In addition to a very competitive premium, Renault Van Insurance also includes: a free 24 hour Accident Recovery Helpline; your van returned to its pre-accident condition; a like for like replacement if written off in first 12 months of registration; signage cover included in your premium; windscreen cover; repairs carried out by Renault Approved Repair Centres using only genuine Renault Parts.

Renault Van Insurance offers unbeatable protection, only fitting genuine Renault replacement parts at Renault Approved Accident Repair Centres to preserve the safety found in all our vehicles.

RENAULT VAN INSURANCE

Call

0845 603 8258

for a quote and instant cover
or visit

www.renaultvaninsurance.co.uk

All quotes are based on individual circumstances and are subject to insurers underwriting criteria. Terms and conditions apply. Renault Insurance is arranged and administered by Equity Insurance Brokers Limited which is authorised and regulated by the Financial Services Authority.

Registered Address: Library House, New Road, Brentwood, Essex CM14 4GD. Registered in England No: 258414.

CUSTOMER SERVICES

Renault knows the value of communicating with its customers and we have established effective ways to keep in touch with you. If after speaking to your local Renault dealership you are not completely satisfied, please contact the Renault UK Customer Service Department on **0800 072 3372** (Mon-Fri 8.30am to 5.30pm).

You can also visit our website www.renault.co.uk Or write to us at: **Renault UK Ltd, The Rivers Office Park, Denham Way, Maple Cross, Rickmansworth, Hertfordshire, WD3 9YS.**